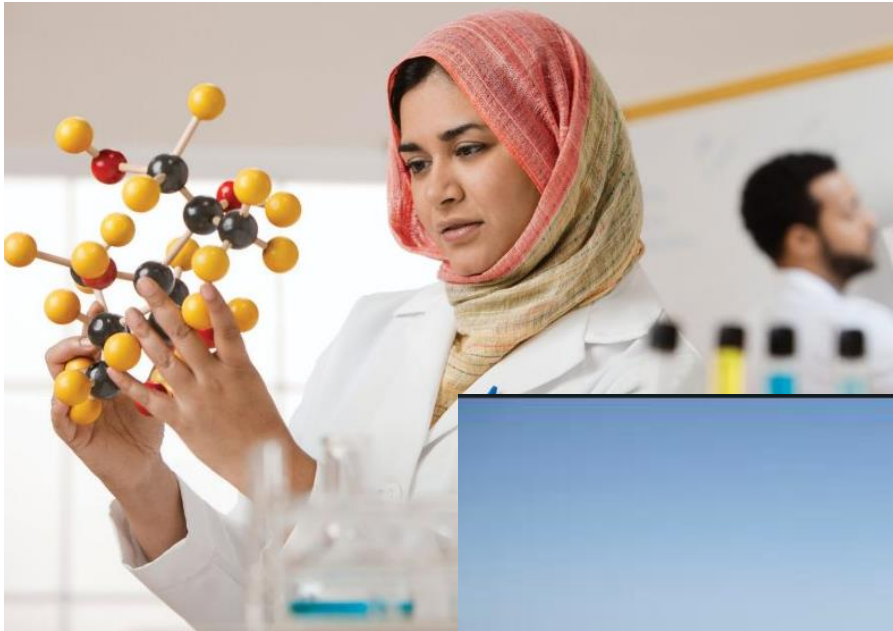


# Tools for the socio-economic inclusion of migrants and refugees: from job search to local integration

Valentina Fabbri  
Programma integra

# Who are the migrants in Italy?



Economical migration

Forced migration



## Who are the migrants

**Migrants for economical/family reasons: 5.026.153 – 8,3% of pop.**

They come with a clear migration project and only if they get an authorization before coming.

	Valore assoluto	Incidenza sul totale stranieri
Romania	1.151.395	22,9%
Albania	467.687	9,3%
Marocco	437.485	8,7%
Cina	271.330	5,4%
Ucraina	230.728	4,6%
Filippine	165.900	3,3%
India	150.456	3,0%
Moldova	142.266	2,8%
Bangladesh	118.790	2,4%
Egitto	109.871	2,2%



# Who are the migrants

## Forced migrants:

**International protection seekers, refugees, beneficiaries of subsidiary protection and humanitarian protection.** Law referment: 1951 Geneva Convention and 32-33/2013 EU directives issued under the CEAS - Common European Asylum System adopted in Italy.



**ASYLUM PROCEDURES DIRECTIVE:** establishes common standards of safeguards and guarantees to access a fair and efficient asylum procedure.



**RECEPTION CONDITIONS DIRECTIVE:** establishes minimum common standards of living conditions for asylum applicants; ensures that applicants have access to housing, food, employment and health care.



**QUALIFICATION DIRECTIVE:** establishes common grounds for granting international protection and foresees a series of rights for its beneficiaries (residence permits, travel documents, access to employment and education, social welfare and healthcare).



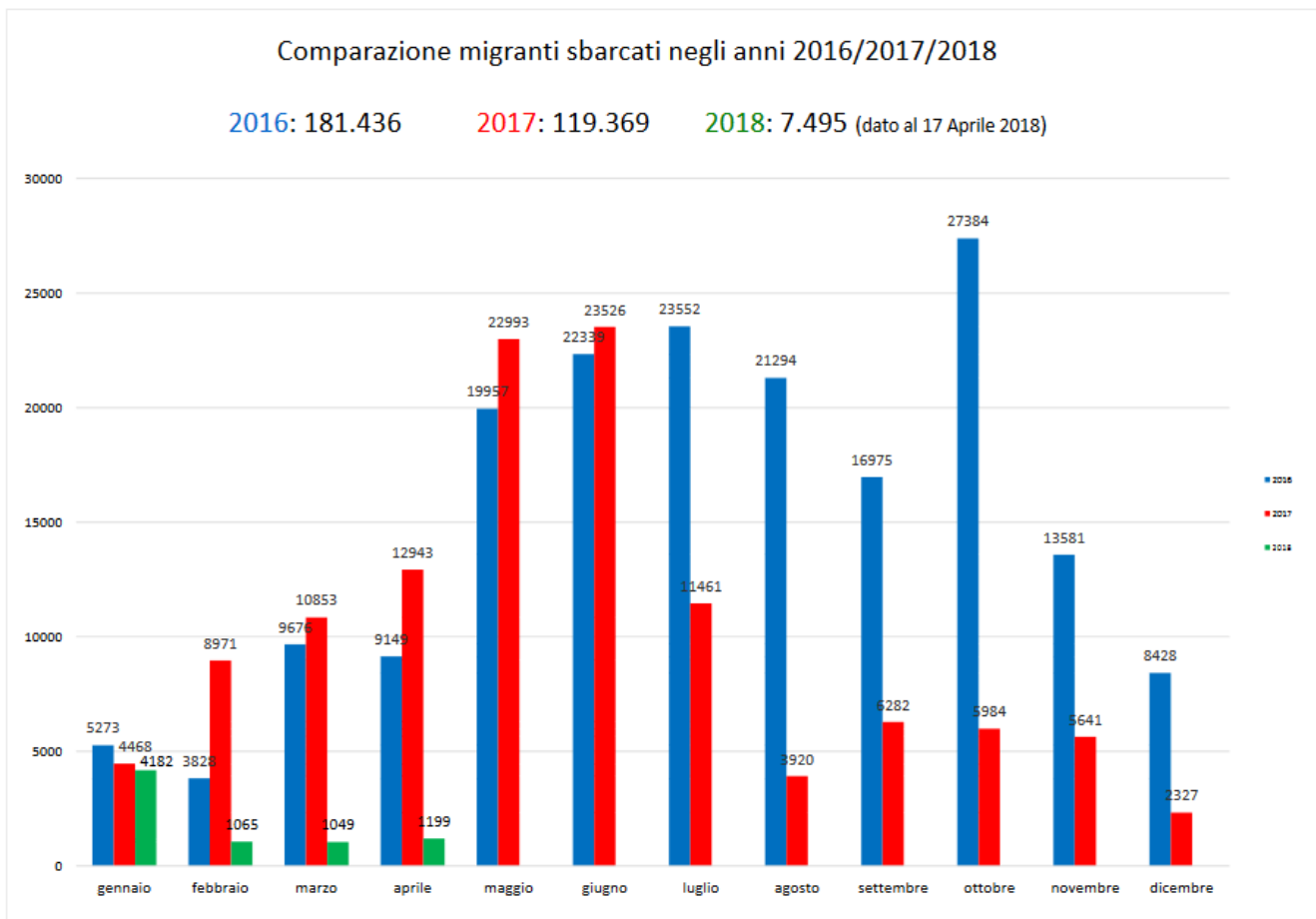
**DUBLIN REGULATION:** determines which Member State is responsible for examining a given asylum application.



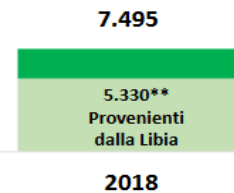
**EURODAC REGULATION:** establishes an EU asylum fingerprint database. When someone applies for asylum, no matter where in the EU, their fingerprints are transmitted to the EURODAC central system.

# Arrivals and first reception

In 2017 less than 31% of arrivals in Italy (compare to 2016)



barcati a decorrere dal 1  
lo stesso periodo degli anni



## Arrivals and first reception

Nazionalità dichiarate al momento dello sbarco anno 2017 (aggiornato al 14/11/2017)	
Nigeria	17.891
Guinea	9.491
Costa d'Avorio	9.138
Bangladesh	8.919
Mali	6.932
Eritrea	6.202
Sudan	6.057
Senegal	5.870
Tunisia	5.755
Gambia	5.750
altre*	32.601
<b>Totale</b>	<b>114.606</b>

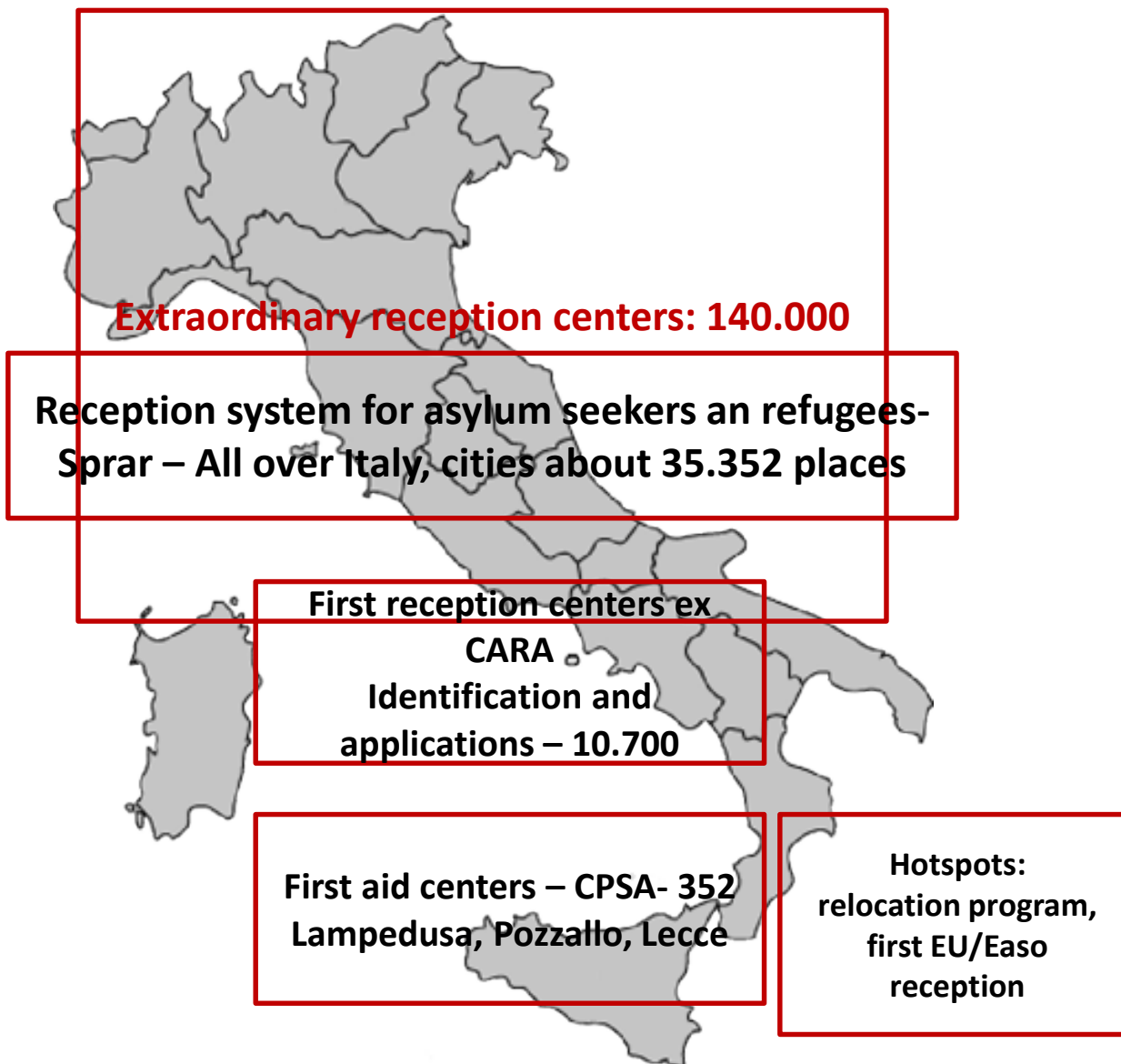
Nazionalità dichiarate al momento dello sbarco anno 2018 (aggiornato al 17/04/2018)	
Eritrea	1.552
Tunisia	1.443
Nigeria	526
Costa D'Avorio	432
Pakistan	328
Guinea	336
Libia	243
Sudan	279
Senegal	253
Mali	305
altre*	1.798
<b>Totale</b>	<b>7.495</b>

# Arrivals and applications

Year	People arrived	Asylum application	Examined	Countries of origins	Women	Denial%	Refugee%	Subs%	Hum%
2001		17.406	17610	Iraq, Turchia, ex Jug		52	17		21
2002	23.719	16.102	21552	Iraq, Turchia, ex Jug		60	8		6
2003	14.331	13.931	13441	Turchia, Ex Jug, Iraq		53	7		17
2004	13.635	9.817	9.446	Somalia,Romania		31	11		33
2005	22.939	9.583	14.052	Ex Jug, Eritrea, Liberia		39	8		30
2006	22.016	9.234	14.254	Eritrea, ex Jug, Nigeria		31	8		36
2007	20.455	12.451	21.198	Ex jug, Eritrea, Nigeria		24	8		47
2008	36.951	31.100	23.175	Somalia, Nigeria, Eritrea		39	9	30	16
2009	9.573	15.918	25.113	Nigeria, Somalia, Bangladesh		44	9	21	10
2010	4.406	8.897	14.042	Nigeria, Ex Jug, Pakistan		33	15	16	26
2011	64.261	32.645	25.626	Tunisia, Nigeria, Pakistan		44	8	10	22
2012	13.245	15.886	26.969	Nigeria, Gambia, Mali		17	7	15	52
2013	42.925	25.207	23.634	Nigeria, Pakistan, Somalia	3.654	29	13	24	24
2014	169.304	61.711	36.270	Nigeria, Pakistan, Gambia	4.753	39	10	23	28
2015	153.842	83.970	71.117	Nigeria, Pakistan, Senegal	9.720	60	5	14	21
2016	181.283	123.600	91.102	Nigeria, Pakistan, Gambia	18.594	58	5	14	21
2017	119.368	130.119	81.527	Nigeria, Bangladesh, Pakistan, Gambia	21.053	58	8	8	25



# Sistema di accoglienza nazionale



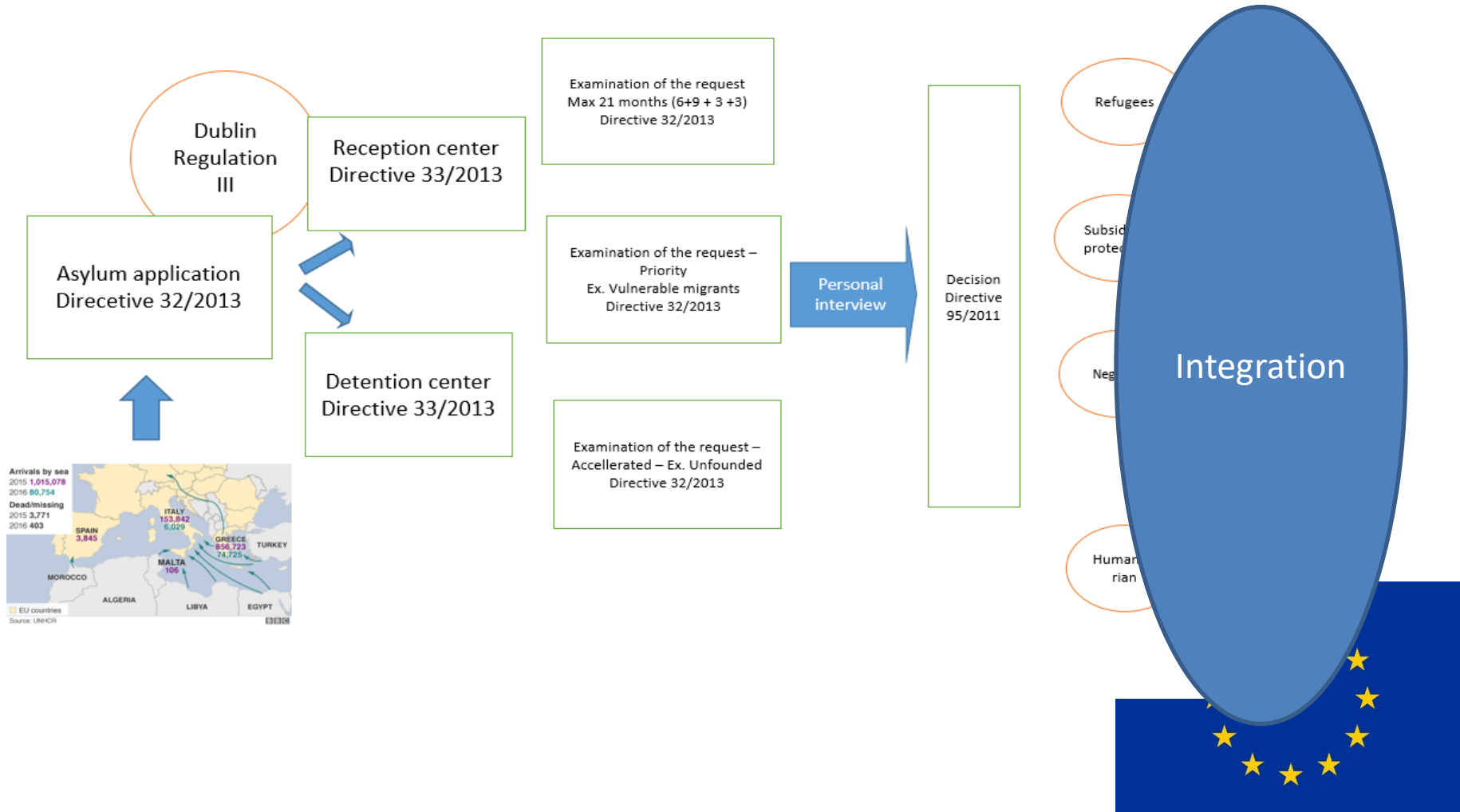
# Rome in numbers



Sprar places:  
1.990

Cas Places:  
2.218

# Who are the migrants



# INTEGRATION

The integration of refugees is a **dynamic and multifaceted two-way process** which requires **efforts** by all parties concerned:

- 1) preparedness on the part of refugees to **adapt** to the host society
- 2) **readiness** on the part of host communities.

The process of integration is **complex and gradual**

Comprising dimensions:

1. **legal**
2. **economic**
3. **social**
4. **cultural**

**UNHCR – United Nation High Commissioner for Refugees**

# INTEGRATION

**Gradual** process by which new residents become **active participants** in the **economic, social, civic, cultural and spiritual** affairs of a new homeland.

*UN*

Integration is a **long-term, complex process** that takes generations and requires accommodation between the new arrivals and the host society.

Successful integration requires: **flexibility, goodwill and generosity** by both migrants and their receiving society.

*EU*

**Multi dimension**

**Long term**

# Multidimension

Rights and citizenship

---

Cultural knowledge

Safety and stability

---

Social Bridges

Social Bonds

Social links

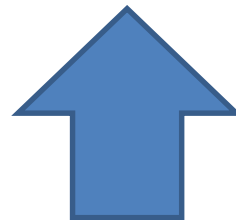
---

Employment

Housing

Education

Health



# Programma integra

«Programma integra is an integrated social cooperative founded in 2005 aimed to promote the **integration** of migrants and refugees to contribute to the wellness of the society».

The social inclusion of migrants is the only way of improving the condition of living inside each communities for all

### Integration is a precondition for an inclusive, cohesive and prosperous society

7 June 2016 - European Commission presented the **Action Plan on the Integration** with the aim to support Member States in the integration of the 20 million non-EU nationals residing legally in EU.

The Plan describes the concrete measures that the Commission will implement in this regard.

· **PRE-DEPARTURE/ PRE-ARRIVAL MEASURES**

· **EDUCATION**

· **LABOUR MARKET & VOCATIONAL TRAINING**

· **ACCESS TO BASIC SERVICE**

· **ACTIVE PARTICIPATION & SOCIAL INCLUSION**





# Italian plan on integration

It was prepared by an Institutional committee foreseen by law.

**Launched 26/09/2017**

The principles that lead the plan's work:

- Integration is a complex concept that starts **from the first reception** and aims at achieving personal autonomy;
- It requires information and **sensibilization** of the population;
- Specific attention should be paid to people with the greatest vulnerability;



# Italian plan on integration

## Principles:

- Early start of integration paths in the **reception phase**;
- Social Inclusion Paths such as: Interreligious Dialogue, Linguistic Education, Access to Education and Qualifications, Training, Access to Healthcare, Access to Housing, Family Reconnection, Information to Services
- Prevention of discrimination
- Participation and active citizenship
- Institutional awareness raising
- Implementation and monitoring of interventions



# How we integrate



Social inclusion

Multi  
dimension  
Legal/econo  
mic/social/cu  
ltural

Training

Raising  
awareness/  
readiness of  
the  
community

Good practices  
exchange and  
research

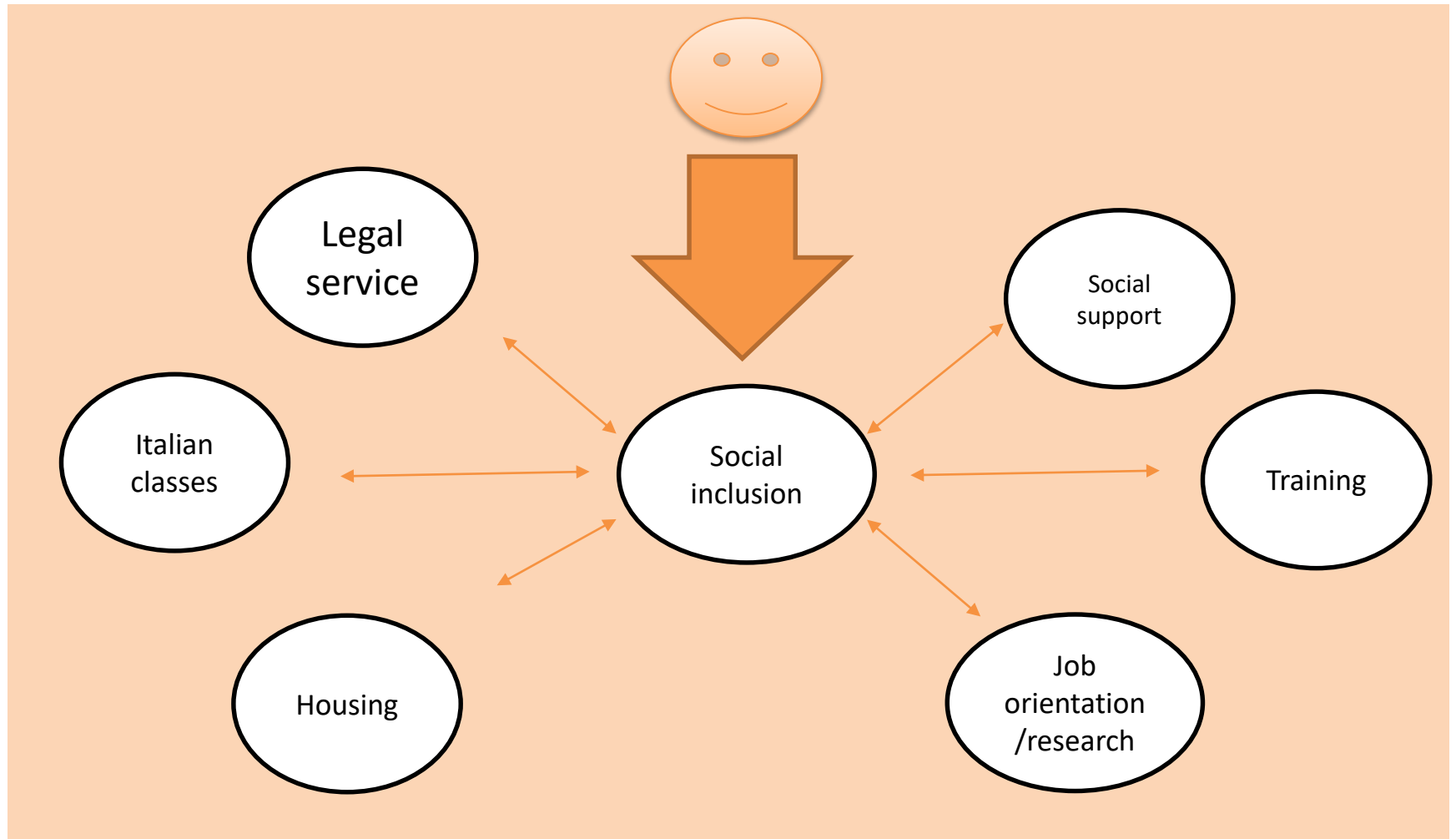
Involvement/  
readiness of the  
community

Support f  
pr  
admin

Involvement/  
readiness of the  
community



## Elements for the social inclusion in Programma integra

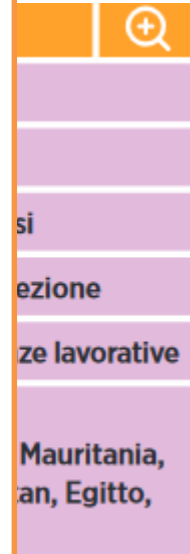


# Job counselling

The office works mostly with asylum seekers and refugees, but we try to help migrants in general, especially when vulnerable.

- counseling on public services for the employment;
- write CVs;
- support an active job search;
- we organize and monitor

**Why?**  
**No public services**  
**No specialization**  
**Need to be fast**  
**No subsidy for companies**



# Job counselling

## What works more

- Internship
- Mediation with enterprises/same language
- Tutoring

## What works less

- No increasing of companies/enterprises
- Little variety of job position
- Lack of recognition of qualification and competencies

# Project and services

**The job orientation service** inside the inclusion services of Immigration office of Rome Municipality .We provide Asylum seekers and holders of protection in SPRAR centers. It is open 3 times a week that coordinates all the reception system

In 2017 people seen at immigration office have been 4.280 for a total of di 10.872 interventions, 356 person/month.

**NEVER ALONE projects:** aims at foster **and young adults (17 – 19 years)**, receive specific training paths in order to guarantee their health, vocational training, work and education. **Period: 2016 -2018**

## Legal services



**Legal counseling:** it provides information and support in relation to legislation and administrative procedures on asylum and immigration. The service started in 2005 mainly among the activities of Rome Municipality.

**In 2016:** 646 intervention about: preparation for the interview in front of the commission, permit of stay, family reunion.

### TIPOLOGIA DI PERMESSO DI SOGGIORNO DEI NUOVI DESTINATARI







Programma  
Integra

# House and education

## **Social mediation in the field of housing**

It provides support in the search of a house, contacts with real estate agents, and support in the signing of the lease. It started in 2013 after the closure of a European Integration Fund project.

*Main project: Immigration office; Homefull project, AMAR*

## **Training and language activities**

Training in particular Market/economic area and traineeship period.

Language classes

*Main project: Immigration office; Never Alone, Re Start Up.*



The project's aim is to devise an innovative model of 'generational encounter', between young foreigners and Italian elder people.

The final objective is to experiment a co-housing path.

Homefull is financed by Lazio re

Period: jan – nov 2015



## Intercultural mediation activities

**Public registry for intercultural mediators:** it supports the activities carried out by the Public Registry of Rome Municipality with the creation and dissemination of training and information activities aimed at intercultural mediators.

**Intercultural mediations inside the “Ospedale San Camillo”** - Funded by Hospital itself

**PRILS project:** intercultural mediation service inside the Prefettura di Roma. Funded by Lazio Region

**Intercultural mediation in SAMIFO:** inside the center for the treatment of mental disease of Refugees ( SAMIFO) – Funded by national AMIF fund

**“Ospedale Amico”:** intercultural mediation inside public health services in ASL Roma 1.



**AREA INCLUSIONE SOCIALE  
MIGRANTI E RIFUGIATI**  
Programma integra

Interventi rivolti a migranti e rifugiati finalizzati ad accompagnarli nel percorso di autonomia economica e sociale.

Vai alla sezione [Area inclusione sociale](#)



**AREA RICERCA E SCAMBIO  
DI BUONE PRATICHE**  
Programma integra

Reti nazionali ed europee per ampliare e approfondire la conoscenza in tema di immigrazione e protezione internazionale.



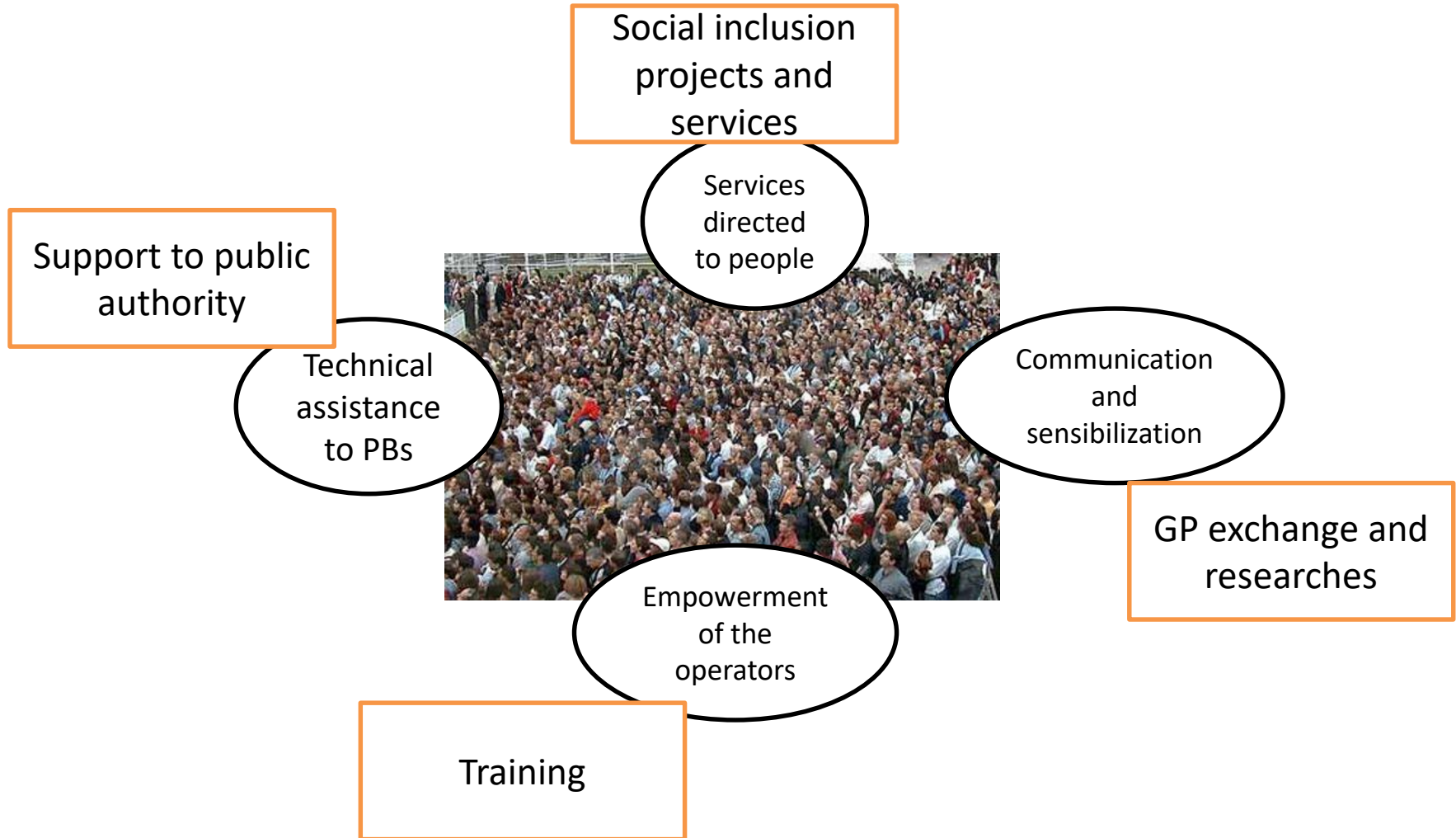
**AREA  
FORMAZIONE**  
Programma integra

Percorsi formativi intensivi e seminariali per migliorare competenze e conoscenze degli operatori del settore nell'ambito dell'accoglienza e integrazione di migranti e rifugiati.

Vai alla sezione [Area formazione](#)



# Programma integra





Thank you for the attention!

[www.programmaintegra.it](http://www.programmaintegra.it)